

## Positional Language Challenge Cards



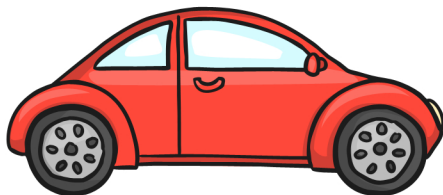
Can you put a teddy bear **under** the sand tray?

## Positional Language Challenge Cards



Can you put a doll **under** the chair?

## Positional Language Challenge Cards



Can you put a car **on** the road?

## Positional Language Challenge Cards



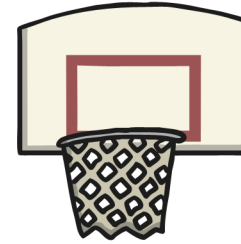
Can you put a book **on** the shelf?

## Positional Language Challenge Cards



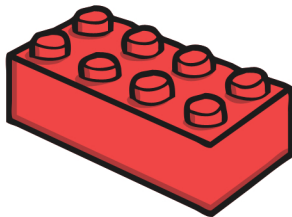
Can you put a **crayon** in the box?

## Positional Language Challenge Cards



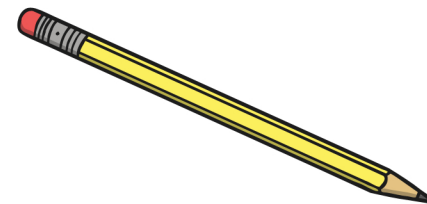
Can you put a ball **in** the hoop?

## Positional Language Challenge Cards



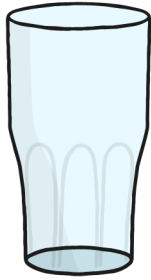
Can you put a red brick **on top of** the green brick?

## Positional Language Challenge Cards



Can you put a pencil **on top of** the paper?

## Positional Language Challenge Cards



Can you put a cup **next to** the sink?

## Positional Language Challenge Cards



Can you put a train **next to** the station?

## Positional Language Challenge Cards



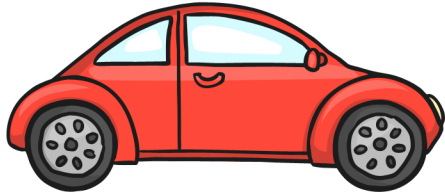
Can you put a book **beside** the computer?

## Positional Language Challenge Cards



Can you put a teddy bear **beside** the cushion?

## Positional Language Challenge Cards



Can you put a car **behind** the house?

## Positional Language Challenge Cards



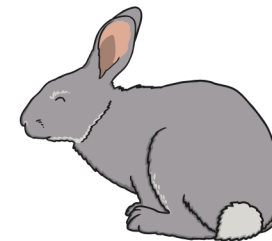
Can you put a teddy bear **behind** the door?

## Positional Language Challenge Cards



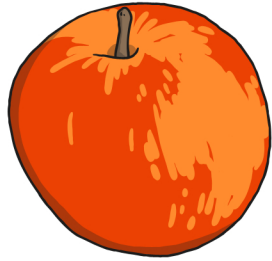
Can you throw a ball **through** the hoop?

## Positional Language Challenge Cards



Can you put the rabbit **between** the cat and the dog?

## Positional Language Challenge Cards



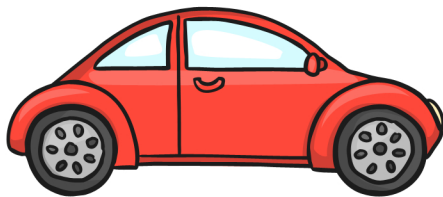
Can you put the apple **between** the oranges?

## Positional Language Challenge Cards



Can you put a doll **in front of** the house?

## Positional Language Challenge Cards



Can you put a car **in front of** the garage?