

Adding and Subtracting Fractions Instruction

| | | |
|--|--------------------------------------|-------------------|
| Yr 6 - WALT: Add and subtract fractions with the same denominator and denominators that are multiples of the same number WALT: Add and subtract fractions with different denominations and mixed numbers, using the concept of equivalent fractions | | |
| Success Criteria: <ul style="list-style-type: none">I am able to find a common denominatorI am able to compare the value of fractions | | |
| I need more help with this | I understand, but need more practise | I understand this |
| | | |
| Comment: | | |

Click on the following website to watch the BBC Bitesize video on adding and subtracting fractions.

<https://www.bbc.co.uk/bitesize/topics/zhdwxnb/articles/z9n4k7h>

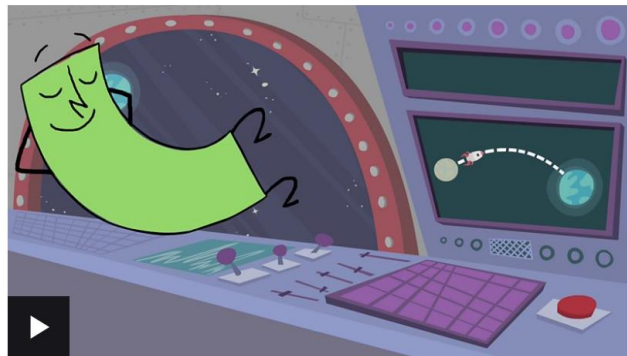
After that have a go at the fraction quiz on the same website page.

KS2

How to add and subtract fractions

Part of Maths | Fractions | Year 3 | Year 4 | Year 5 | Year 6

+ Add to My Bitesize



Here is an additional instruction video on adding and subtracting fractions to help. [Adding Fractions with Different Denominators - YouTube](#)

