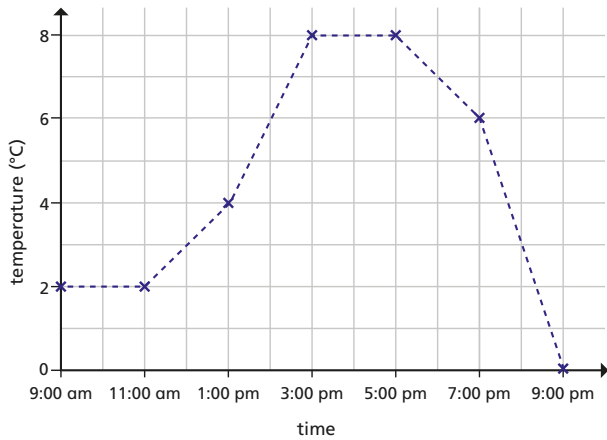


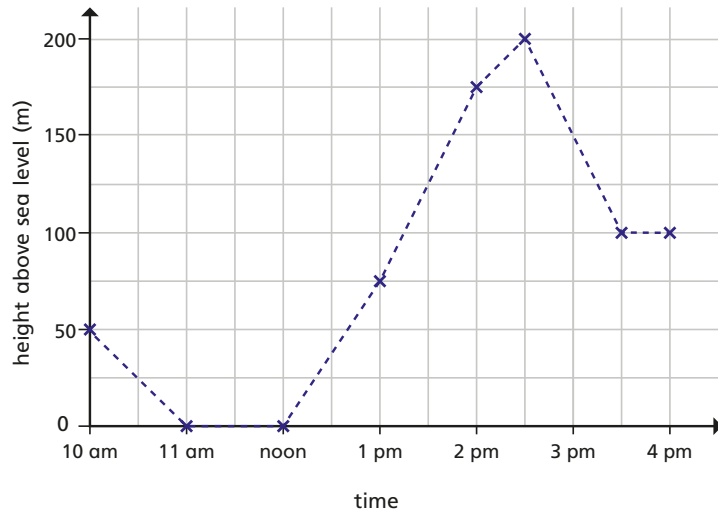
1 The graph shows the temperature in Birmingham on one day.



- What was the temperature at 1:00 pm?
- What was the difference in temperature between 11:00 am and 1:00 pm?
- Between which times was the temperature increasing?
- How often was the temperature recorded?

2 Aisha goes for a walk.

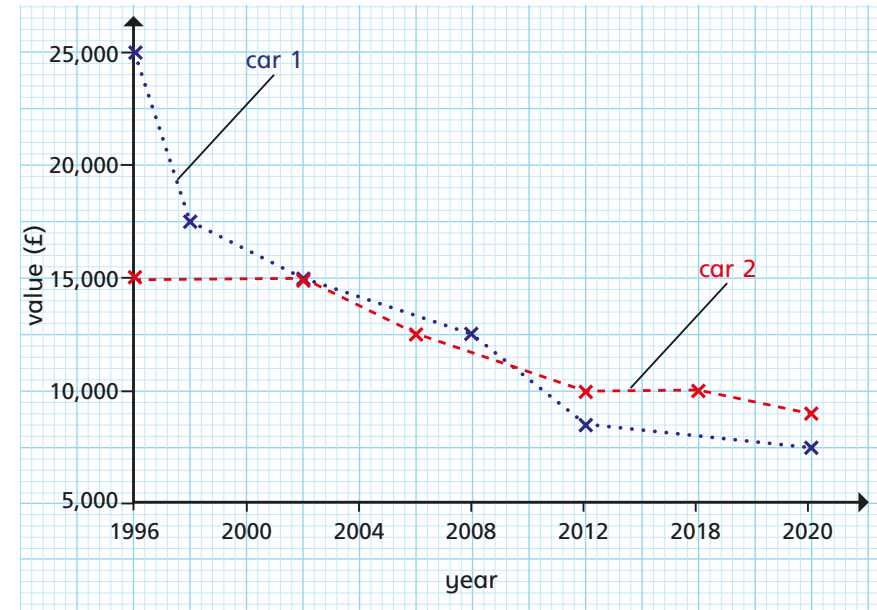
The graph shows the height above sea level during her walk.



- What was the height above sea level where Aisha was walking at 2 pm?
- At what time in Aisha's walk was she standing 200 m above sea level?

- Part of the walk was along a beach.
Between which times did Aisha walk along the beach?
How do you know? Talk about it with a partner.
- Did the walk start and finish in the same place?
Explain how you know.

3 The graph shows the values of two cars over time.

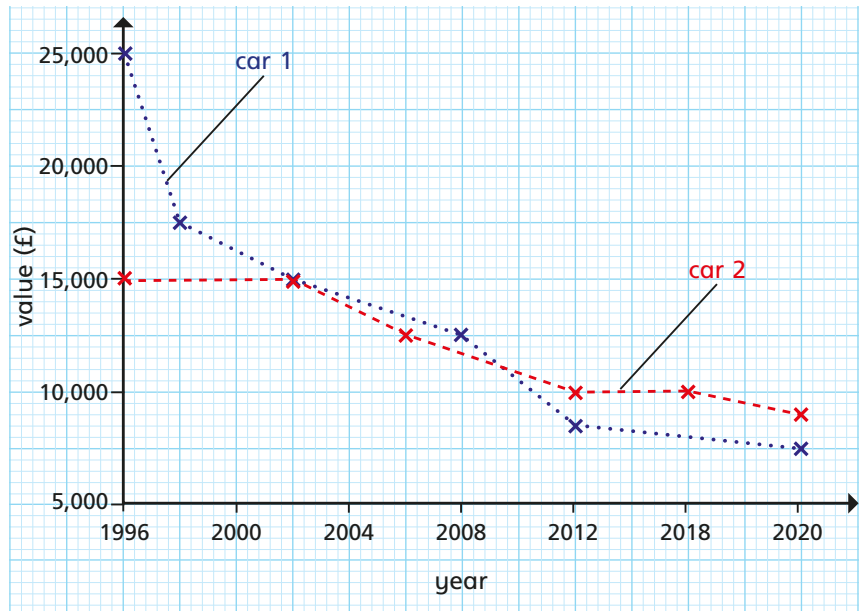


- In which year was the recorded value of the cars the same?
- In which two years was the difference in the recorded values of the two cars the same?
- Which car's value decreased the most between 1996 and 2020?
- For approximately how many years was the value of car 2 greater than the value of car 1?

- c) Part of the walk was along a beach.
Between which times did Aisha walk along the beach?
How do you know? Talk about it with a partner.
- d) Did the walk start and finish in the same place?
Explain how you know.

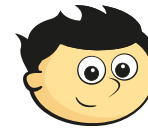


3 The graph shows the values of two cars over time.



- a) In which year was the recorded value of the cars the same?
- b) In which two years was the difference in the recorded values of the two cars the same?
- c) Which car's value decreased the most between 1996 and 2020?
- d) For approximately how many years was the value of car 2 greater than the value of car 1?

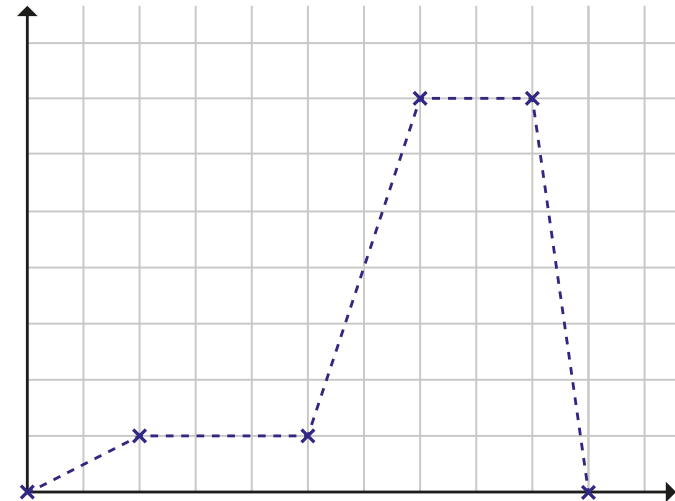
e)



The value of car 2 halved between 1996 and 2012

- Do you agree with Jack?
Explain your answer.

4 Here is a line graph.



- a) What could be happening in the graph?
Write a story to match it.
- b) What would the x -axis be labelled for your story?
- c) What would the y -axis be labelled for your story?
- d) Write two questions that you could ask a partner about your story.

