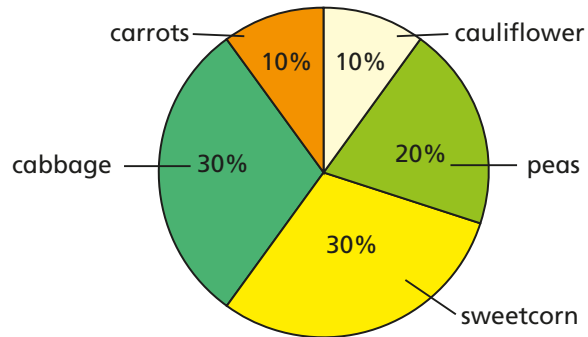
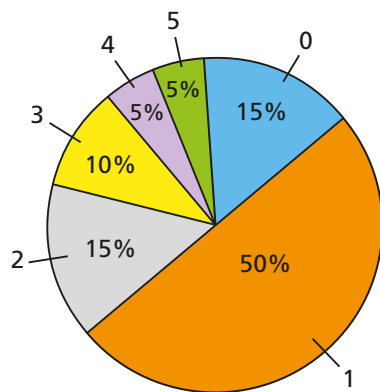


- 1** 60 children were asked to choose their favourite vegetable from five options.



- Work out the number of children who chose each vegetable.
- How many more people chose peas than cauliflower?
Compare methods with a partner.
- How many more people chose sweetcorn or cabbage than chose carrots?
Compare methods with a partner.

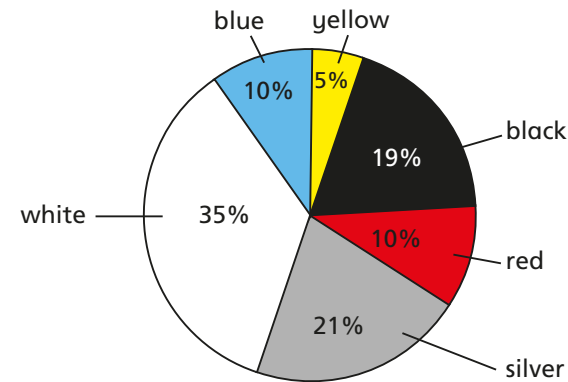
- 2** 160 people were asked how many siblings they have. The results are shown in the pie chart.



Complete the table. Show each step of your workings.

Siblings	Frequency

- 3** The pie chart shows the colours of cars in a car park on one day. There were 30 yellow cars.



- How many cars were in the car park in total?
- Complete the table.

Colour of car	Frequency
yellow	30
black	
red	
silver	
white	
blue	

How can you check your answers?

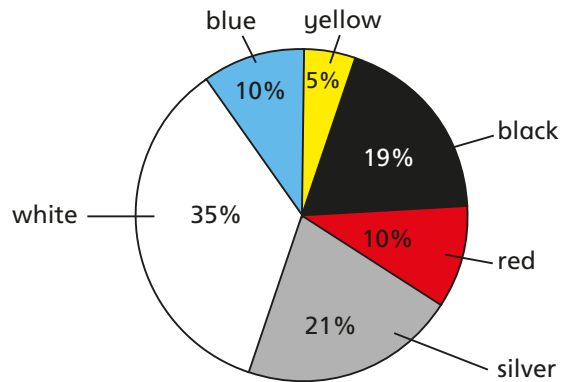


Complete the table. Show each step of your workings.

Siblings	Frequency

3 The pie chart shows the colours of cars in a car park on one day.

There were 30 yellow cars.

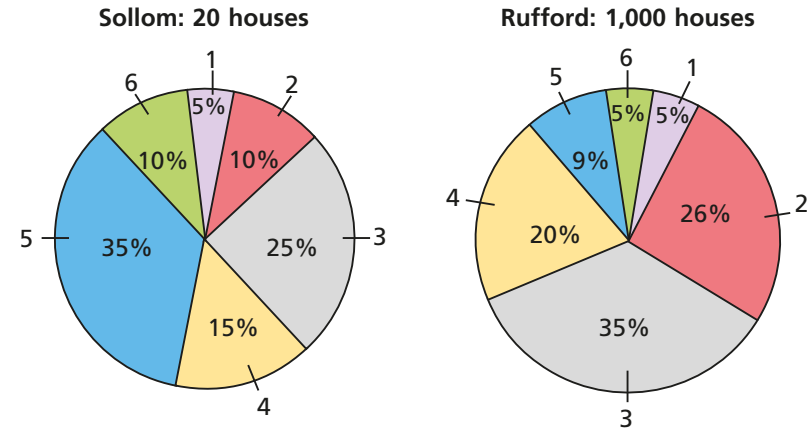


- How many cars were in the car park in total?
- Complete the table.

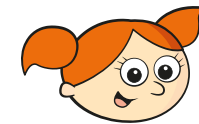
Colour of car	Frequency
yellow	30
black	
red	
silver	
white	
blue	

How can you check your answers?

4 The pie charts show the number of bedrooms in the houses in Sollom and Rufford.



a)



There are twice as many six-bedroom houses in Sollom than in Rufford because 10% is double 5%.

Do you agree with Alex?

Explain why.

- How many more one-bedroom houses are there in Rufford compared to Sollom?