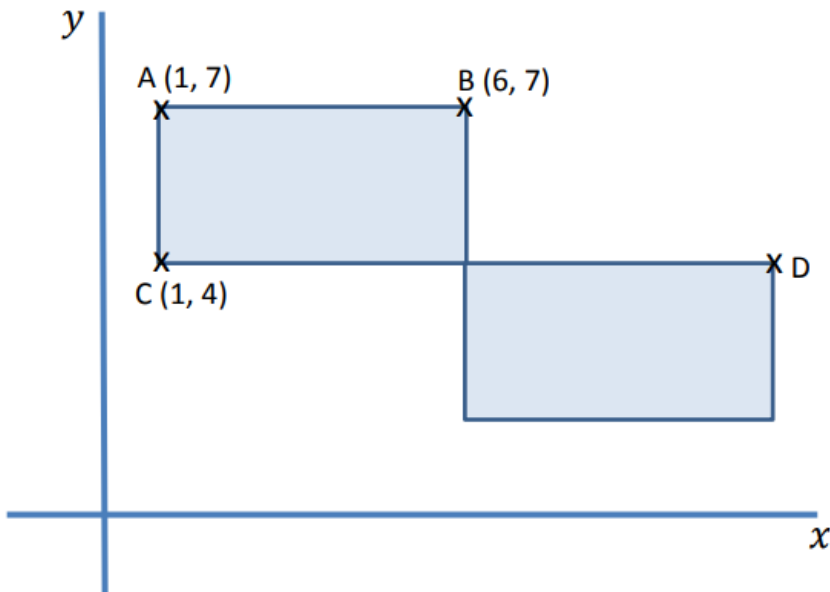


Coordinates

1

Below are two identical rectangles.

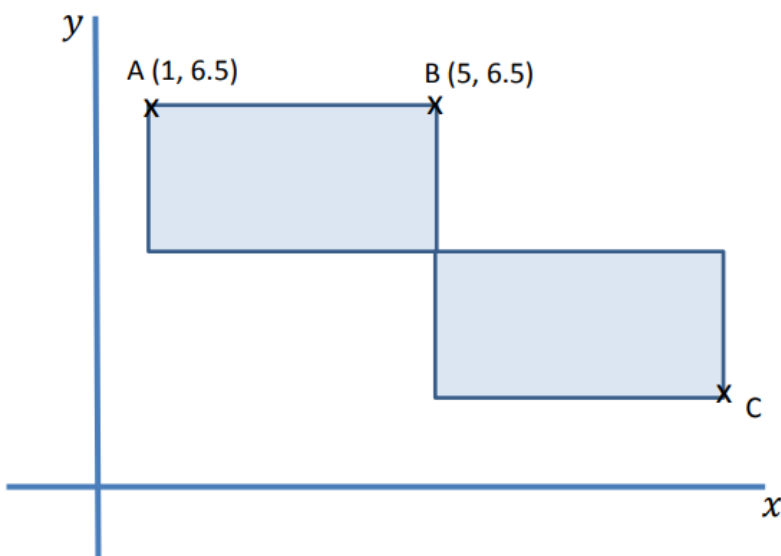


Find the co-ordinates of point D.

Explain how you got your answer.

2

Below are two identical rectangles.

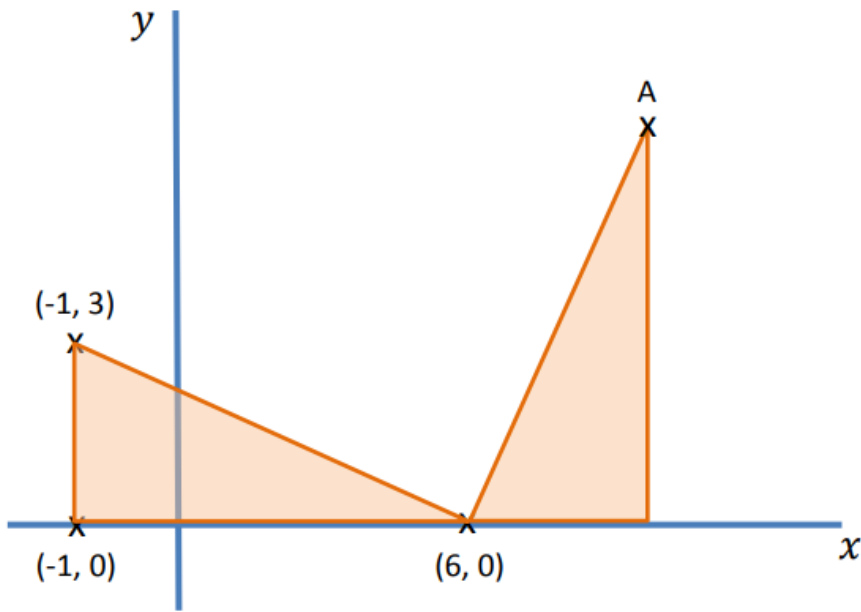


In each rectangle the length is double the width.

Find the co-ordinates of point C.

3

Below are two identical triangles.

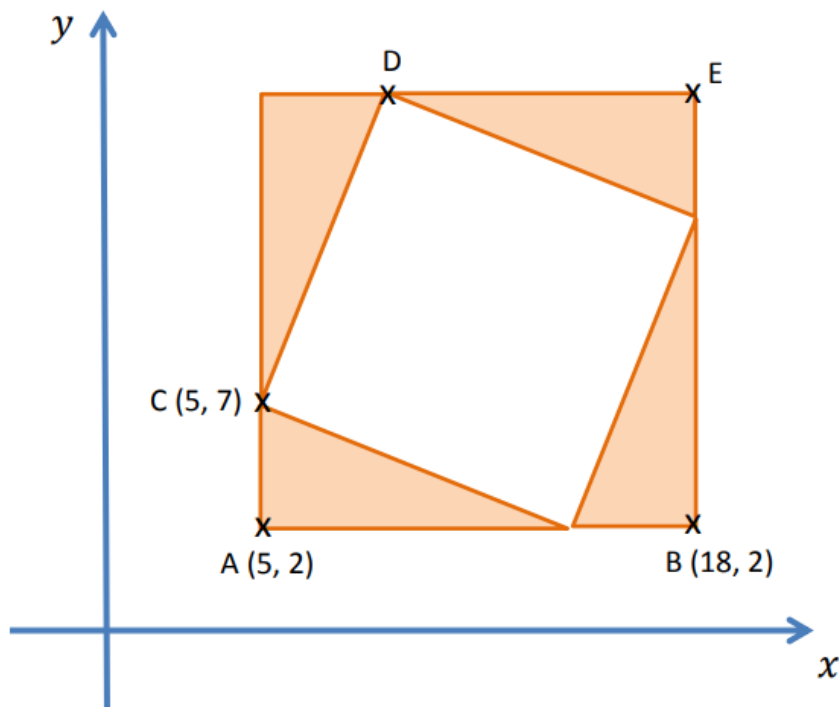


The co-ordinates of three points are shown.

Find the co-ordinates of point A.

4

Four congruent triangles fit together to make the following shape.



The coordinates of three points A, B and C are given.

Find the coordinates of points D and E.

Answers

1). Point D = (12,4)

Explanation = Point D is on the same Y axis as Point C which is 4. The rectangles are identical and so I know the length from Point A to B is 6, therefore the length from Point C to Point D is double this which is 12.

2). Point C = (10, 1.5)

3). Point A = (9, 7)

4). D = (10,15)

E = (18,15)