

Percentages

Mental Maths Warm Up

Answer these as quickly as you can, saying your answer out loud or in your head...

- Find the missing number. $57\% = \frac{?}{100}$
- What is $\frac{20}{100}$ in its simplest form?
- Kirstie is working out 20% of 50. She has written the calculation $\frac{1}{5} \times ?$
What is the missing number in her calculation?

Answers: (1) 57 (2) $\frac{1}{5}$ (3) 50

Now try these. Do your working in the spaces, and copy your answers into the boxes.
One has been done for you.

- 1** 50% of 12

$$50\% = \frac{50}{100} = \frac{1}{2}$$

$$\frac{1}{2} \times 12 = \frac{12}{2} = 6$$

- 2** 20% of 25

- 3** 30% of 40

- 4** 80% of 65

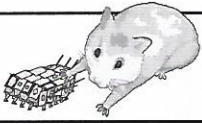
- 5** 60% of 150

- 6** 70% of 210

- 7** 40% of 7

You should get a decimal answer for this one.

- 8** 90% of 53



Percentages

Have a go at these. Do your working in the spaces. One has been done for you.

9 25% of 16

$$25\% = \frac{25}{100} = \frac{1}{4}$$

$$\frac{1}{4} \times 16 = \frac{16}{4} = 4$$

13 70% of 420

10 75% of 24

14 30% of 320

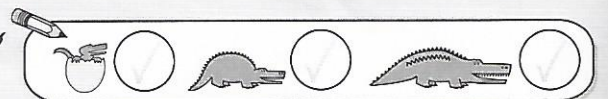
11 15% of 80

15 18% of 50

12 65% of 60

16 22% of 150

A fully grown Calculgator would have no trouble finding percentages like these ones. How did you get on?





Decimals, Fractions and Percentages



Mental Maths Warm Up

Answer these as quickly as you can, saying your answer out loud or in your head...

- Sarah has completed $\frac{2}{3}$ of the levels of a game.
Dave has completed 50% of the levels. Who has completed more of the game?
- What's $\frac{31}{100}$ as a percentage?
- 0.13 is the same as 13%. What's 0.13 as a fraction?

Answers: (1) Sarah (2) 31% (3) $\frac{13}{100}$

Now try these. Put your answers in the boxes. Give fraction answers in their simplest form.

- 1 Write 0.861 as a percentage.

- 2 Write 7% as decimal.

- 3 Find $\frac{3}{5}$ as a percentage.

- 4 Find $\frac{140}{2000}$ as a percentage.

- 5 Find 0.7 as a fraction.

- 6 Find 0.36 as a fraction.

Changing between decimals, fractions and percentages is no trouble for a Calcugator. How do you feel?

