

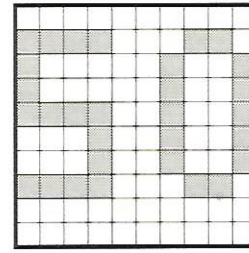
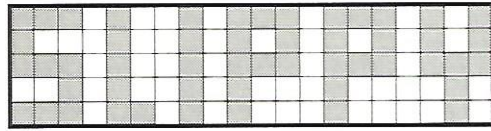
Name: \_\_\_\_\_

Division: second decimal place,  
notation

Heinemann Mathematics 6  
Workbook page 10

# Allt Bridge signs

- 1 Each sign has 100 light cells.  
How much of each sign is lit? Write your answer  
• as a fraction • in decimal form.



- 2 Write each fraction in decimal form.

13 hundredths \_\_\_\_\_ 40 hundredths \_\_\_\_\_

$\frac{1}{100}$  \_\_\_\_\_

$\frac{10}{100}$  \_\_\_\_\_

- 3 Write each of these decimals in **two** other ways.

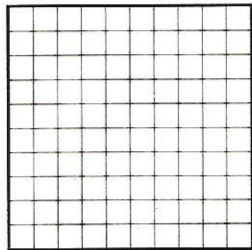
0.86  $\left\{ \begin{array}{l} \text{_____} \\ \text{_____} \end{array} \right.$

0.90  $\left\{ \begin{array}{l} \text{_____} \\ \text{_____} \end{array} \right.$

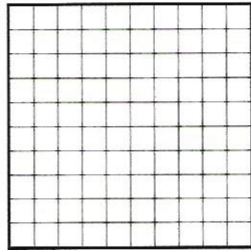
0.09  $\left\{ \begin{array}{l} \text{_____} \\ \text{_____} \end{array} \right.$

- 4 Each sign has 100 light cells.  
Colour to show the given fraction.

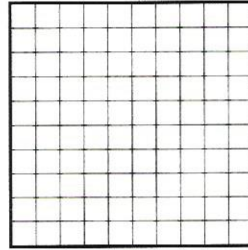
0.62



0.26



0.06



0.50

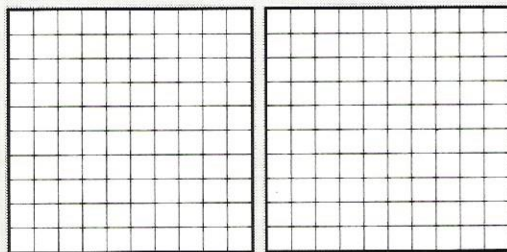


0.99

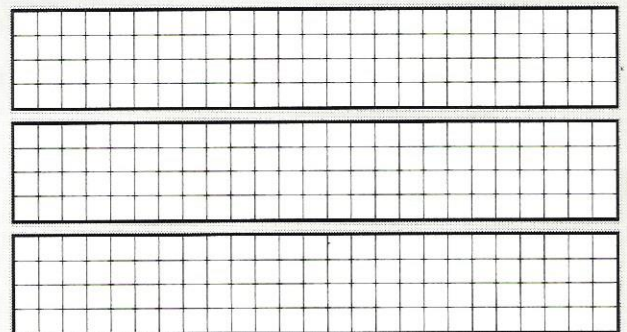


- 5 Colour to show the given amount.

1.42



2.20



- 6 Write in decimal form:

3 units and 22 hundredths \_\_\_\_\_

4 units and 70 hundredths \_\_\_\_\_

3 units and 3 hundredths \_\_\_\_\_

5 units and 49 hundredths \_\_\_\_\_