



A snail can sleep for three years at a time.

Word of the week

Definition:

Use it in a sentence:

oxymoron

Word Class:

Antonym:

Synonyms:



This week, we are looking at words that have a 'soft c'.

A 'soft c' makes an /s/ sound. This can mean that some words that may sound like they start with an 's' can actually begin with the letter 'c'.

For example:



centre



celebrate



certificate

If the second letter of a word that starts with an /s/ sound is an 'e', 'i' or 'y', the sound **could** in fact be made with a 'c'!

With your partner, how many words can you think of in one minute that have a 'soft c' spelt 'ce'? Remember the 'soft c' might not be at the beginning of the word.

Start timer



Did you find any of your spelling words?

cemetery

certificate

celebrate

necessary

prejudice

deceased

December

sacrifice

hindrance

nuisance

Mr Whoops has muddled up the dictionary. Can you help him to unjumble the definitions?

necessary to offer a killing or possession (usually for religious reasons)

December to enjoy a social gathering in honour of a special event

sacrifice a person or thing that causes annoyance

cemetery a burial site or graveyard

nuisance absolutely needed

celebrate a winter month



Did you manage to help Mr Whoops to unjumble the definitions?

sacrifice to offer a killing or possession (usually for religious reasons)

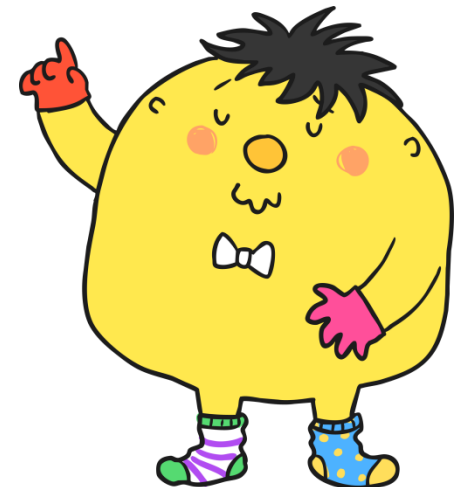
celebrate to enjoy a social gathering in honour of a special event

nuisance a person or thing that causes annoyance

Cemetery a burial site or graveyard

necessary absolutely needed

December a winter month



Here are this week's spellings to practise.

cemetery

certificate

celebrate

necessary

deceased

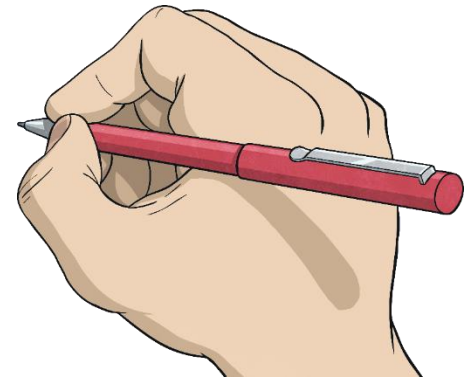
December

sacrifice

hindrance

nuisance

prejudice



Write your spellings in to your book,
including the title:

Words with a 'soft c' spelt 'ce'