

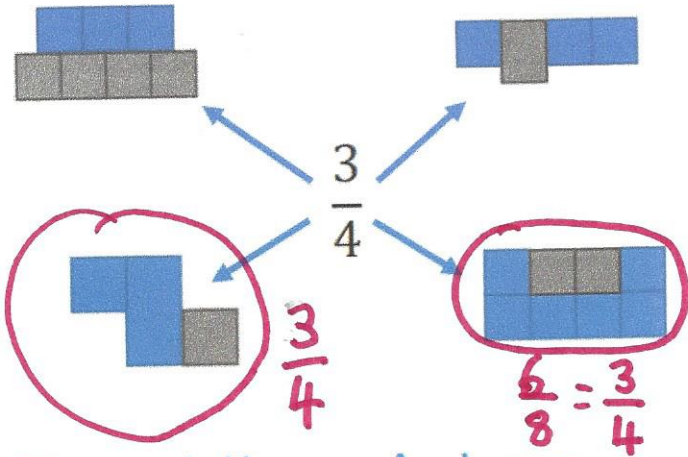
ANSWERS

WALT: use our knowledge of fractions to solve problems.



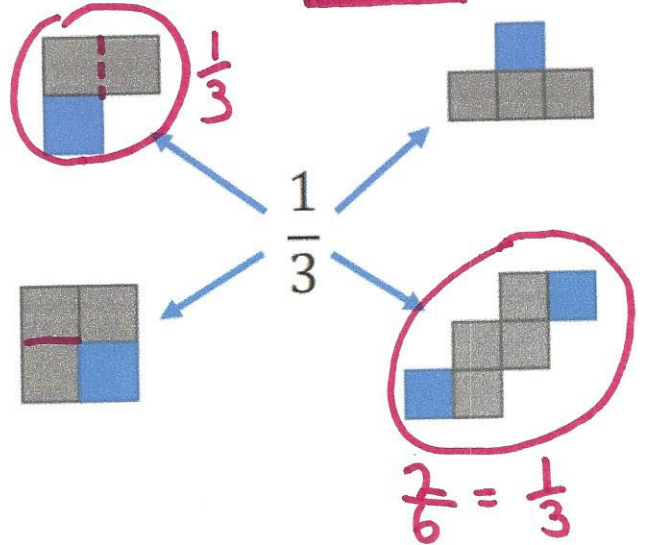
Read the pictures

Which shapes are three-quarters blue?



Read the pictures

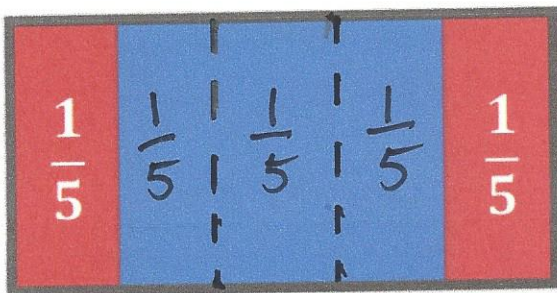
Which shapes are one-third blue?



Read the picture

What fraction of the shape is red?

What fraction of the shape is blue?

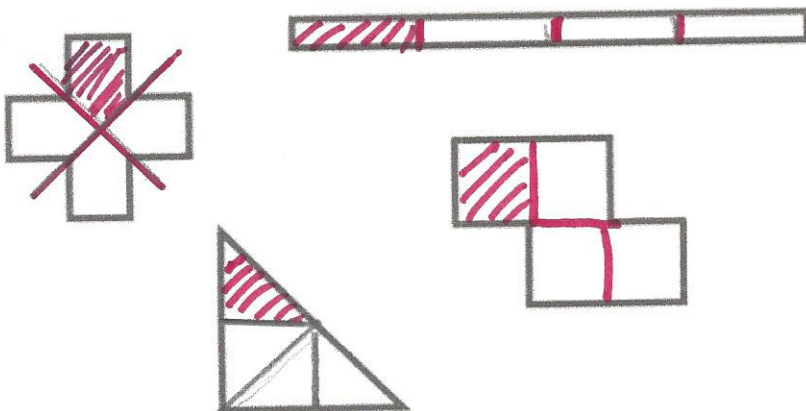


red = $\frac{2}{5}$

blue = $\frac{3}{5}$

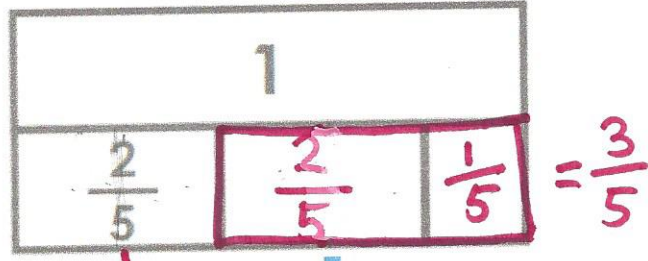
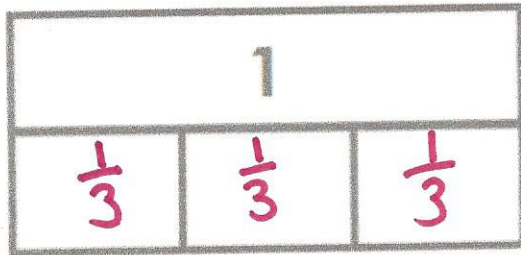
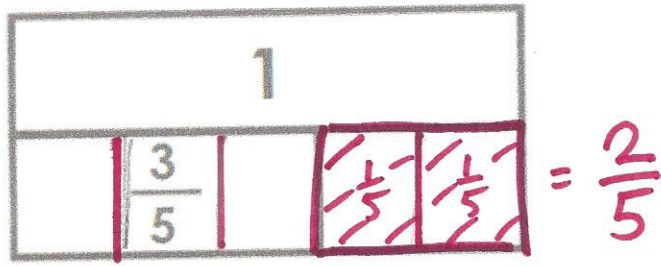
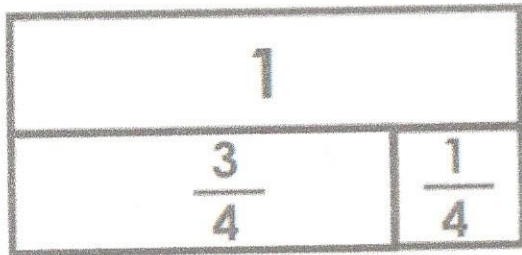
Draw

Shade in $\frac{1}{4}$ of each shape:



Read the pictures

Complete the missing parts in the bar models:

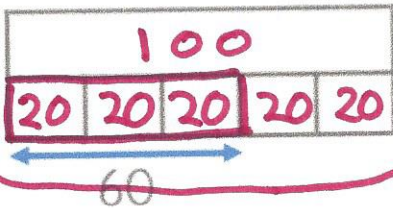
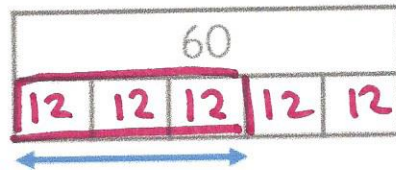


Which picture?

Match the question to the bar model.

Use the bar models to answer the questions.

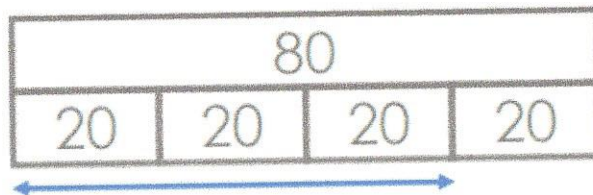
$\frac{3}{5}$ of 100 = 60



$\frac{3}{5}$ of 60 = 36

I know... so...

1 of 80 = 20



$\frac{3}{4}$ of 80 = 60

$\frac{3}{4}$ of 160 = 120

