

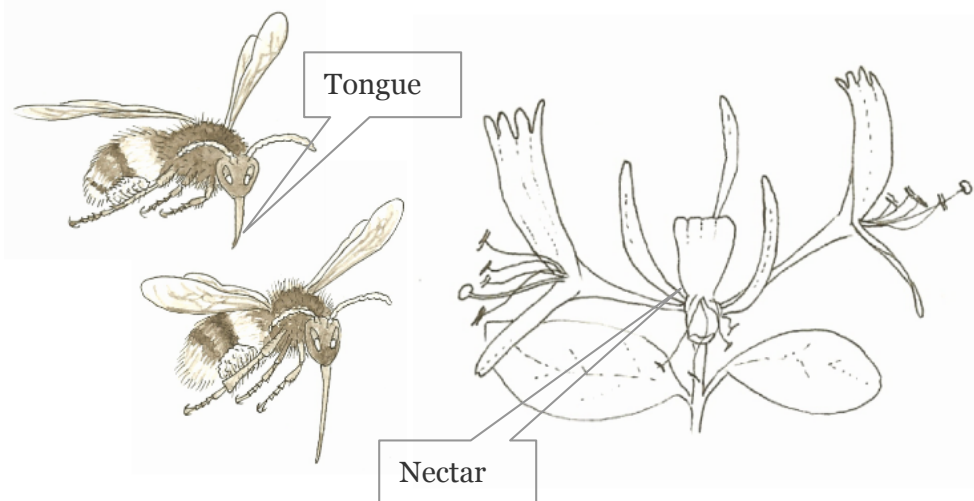
## A Quick Guide to Bumblebees

Bumblebees are classified as **invertebrates** and, more specifically, **insects**. Like honeybees, bumblebees are social insects - living in a nest with often hundreds of other bumblebees. Almost all the bees in a nest are sisters, and the offspring of the mother bee (or Queen). Some brothers are born in late summer. The daughter bees are called **workers** and help the queen to collect food, keep the nest clean and look after the young larvae growing inside the nest.

Only queen bumblebees survive the cold winter, **hibernating** (sleeping) through the cold weather. Each spring the new queens start over; finding a good nest (often an old mouse nest underground) and laying eggs.



## Even when they feed it's interesting...



Scientists have noticed that different species of bumblebee prefer to feed on different flowers.

1. What in the picture shows how they are adapted to do this?
2. Why is this good for the two species?
3. What would happen if the preferred flowers of one species disappeared?

### Perfectly Adapted

Apart from their wings, which let these little insects fly up to a mile from home in search of food, bumblebees have some other very clever adaptations for survival. They have long tongues to drink the sugary nectar from flowers, and hairy legs to collect protein-rich pollen, which they feed to the young larvae. Their hair insulates them, and they can even shiver their tiny muscles to get warm.



**Which bees would prefer these flowers - long-tongued or short-tongued bees?**

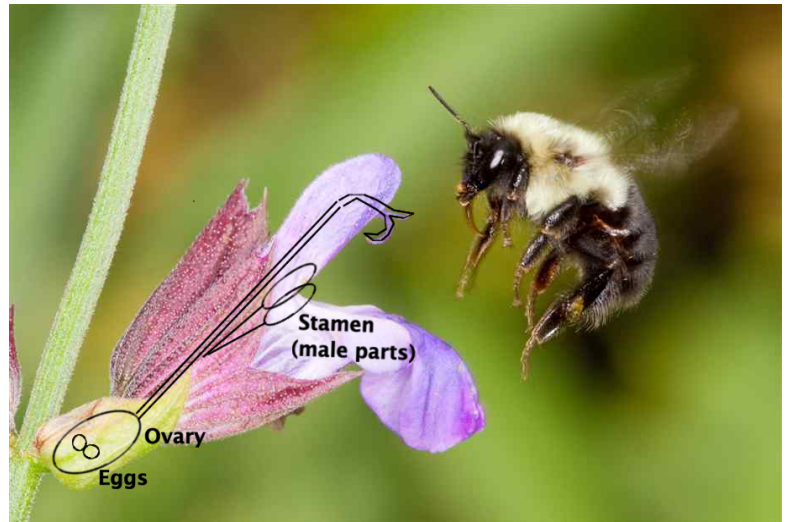


## Pollination Quiz

1. Label where pollen comes from.
2. Label the female part of the flower known as the stigma.
3. Show how pollen is dusted onto the bee as it visits to feed on nectar.

Each pollen grain can fertilize one egg, and each egg can become a seed for a new plant.

This process is called Plant  
R.....



## Save our Bumblebees

We don't give it much thought, but we rely on insects like bumblebees to produce our fruit and vegetables. Over the last one hundred years our countryside has changed. There are now more people, more towns, and more pollution. Farms have got bigger and now use chemicals to kill weeds and pests.

**Design a poster about the lives of bumblebees and their importance to plants and people.**

Try to use these keywords:

**Queen**

**Worker**

**Nest**

**Lifecycle**

**Hibernate**

**Adapted**

**Pollination**

**Crops**



Busy bees activity sheets are produced thanks to the generous support of:





Busy bees activity sheets  
are produced thanks to  
the generous support of:

